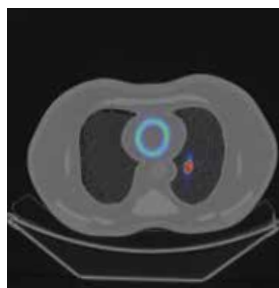


PH-63 | 41927-000

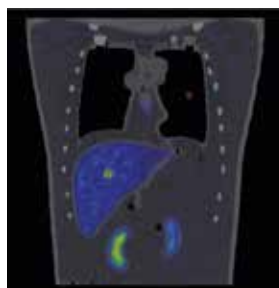


Thorax Phantom for RI

Thorax Phantom for RI is an optimal tool for study in nuclear medicine



SHOW MORE!



FEATURES

Examination of myocardial density through SPECT imaging

- | Verification of myocardial imaging with the use of various RI solution densities
- | Myocardial infarction can be depicted
- | By filling RI solution into the lungs, liver and kidneys, the effect of these organs on the heart can be recreated.

Examination of RI solution density for simulated tumors

- | The simulated tumors can be inserted into lung, liver and breast
- | Tumors can be filled with FDG/RI solution into the spheres for evaluation of density, size and placement

APPLICATIONS

- | PET
- | Quality management of NM equipment
- | RI solution density for tumor imaging

ANATOMY

- | Liver
- | Lung (right/left)
- | Kidney (right/left)
- | Hot spots (liver, lungs and breast)
- * Hot spot for PET can be set in liver, lungs and breast.
- | Heart
- Anatomical type: right ventricle, left ventricle and myocardium
- Geometric type: left ventricle and myocardium

- HU**
- | Bone: 370HU
 - | Lung: -900HU
 - | Organ shell material: 100HU, and 1.16g/cm³ in density

DESCRIPTIONS

SET INCLUDES

1 thorax body	1 base
2 lungs (left and right)	6 plastic pins
4 hearts	6 supporting bars
1 liver	4 metal frame
2 kidneys (left and right)	1 silicon sealing gasket
1 rib cage and spine	3 tubes
2 breasts (left and right)	1 syringe
3 hot spots	12 nuts and bolts
2 aorta	1 water tank
1 beaker	1 Vaseline manual

MATERIALS

Soft tissue: transparent polyurethane
 Lungs: materials with density 0.4 g/cm³
 Bone materials: Calcium-infused material to provide proper attenuation with use of RI solutions

SPECIFICATIONS

Phantom size: W44×H69.4 cm
 W17.3×H27.3 in

Phantom weight:
 phantom itself: 21 kg / 46.2 lb
 when filled with liquid: 37.5 kg / 82.6 lb

