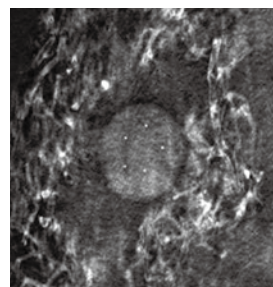


PH- 83 | 41956-000

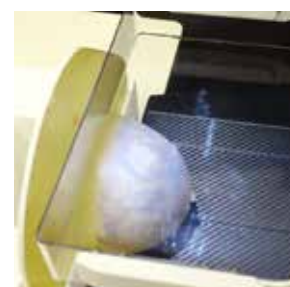


Compressible Mammography Phantom Comp-AY

Allows for thorough visual evaluation under a variety of scanning conditions and image comparison of different modalities.



SHOW MORE!



CHEST PHANTOMS

FEATURES

- | Soft and resilient material of the phantom allows breast compression for imaging.
- | Three-dimensional structure of simulated mammary gland fibers and tumors to visualize realistic medical images.
- | Allows for visual evaluation under different scanning conditions and locations of tumors
- | Allows for image comparison of different modalities

APPLICATIONS

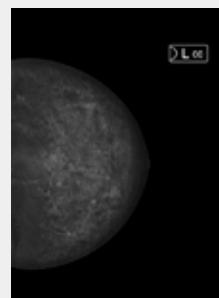
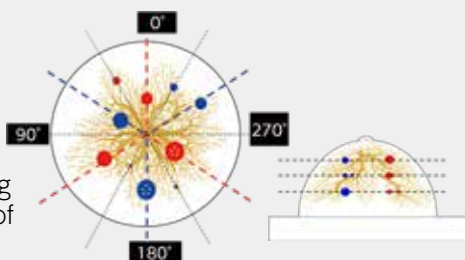
- | Tomosynthesis
- | Mammography
- | Evaluation and study of effect of breast compression on image quality
- | Patient Positioning

ANATOMY and Pathologies

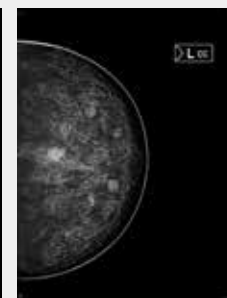
Simulated targets: 2, 4, 6, 8, 10mm dia.
 Calcifications: 0.3mm dia. x 5 in each 10mm dia. target

- high density
- low density
- ⊕ target with calcifications
- ☼ mammary gland

Angle gauge on the back of the phantom for reproducible setting as well as to simulate a variety of patient cases.



tomosynthesis (DBT)



mammography(2D)

DESCRIPTIONS

SET INCLUDES

- 1 breast phantom
- 1 supporting holder
- 1 set of sample X-ray data (DVD)
- 1 manual

MATERIALS

polyurethane

SPECIFICATIONS

Phantom size:
 base :26 dia.×H3 cm, 10.2 dia.×H1.2 in
 mamma:14 dia.×H9 cm, 5.5 dia.×H3.5 in
 Phantom weight: 2.5kg, 5.5lb

PUBLICATION REFERENCES

A. Takada, H. Inagawa, M. Inohara, N. Ikeda, N. Nakagawa, A. Takeuchi, Y. Nagai, Verification of Breast Compression Effects in Digital Mammography and Digital Breast Tomosynthesis Using Compressible Breast Phantom. ECR24, C-14022